

Compliance Certification Application Reference Expansion

---

Eager, G.P. 1983. Core from the Lower Dewey Lake, Rustler, and Upper Salado Formation, Culberson County, Texas. In Permian Basin Cores, R.L. Shaw and B.J. Pollen, eds., P.B.S.-S.E.P.M. Core Workshop No. 2, pp. 273-283. Permian Basin Section, Society of Economic Paleontologists and Mineralogists, Midland, TX.

INTRODUCTION, p 273;

" Seven hundred and twenty feet of continuous Upper Permian core is displayed by Texasgulf, Inc. The formations cored include the lower portion of the Dewey Lake, the Rustler, and the upper portion of the Salado. This core was obtained by Texasgulf, Inc., as part of a sulphur exploration program. The depth of the core is from 37 feet to 757 feet. It is located in the SE $\frac{1}{4}$ , Section 5, PSL, Block 45 (12 miles southwest of Orla) Culberson County, Texas (Fig. 1). Gamma ray and neutron logs are included (Fig. 2) so that the lithology can be compared to the geophysical response. All depths are reported in feet.

The core is presented to give Delaware Basin geologists a 'hands-on' look at the strata that comprise the 'overburden' and troublesome drilling zones through which they must drill to reach the deeper oil-bearing horizons. The Rustler Formation may have reservoir potential."



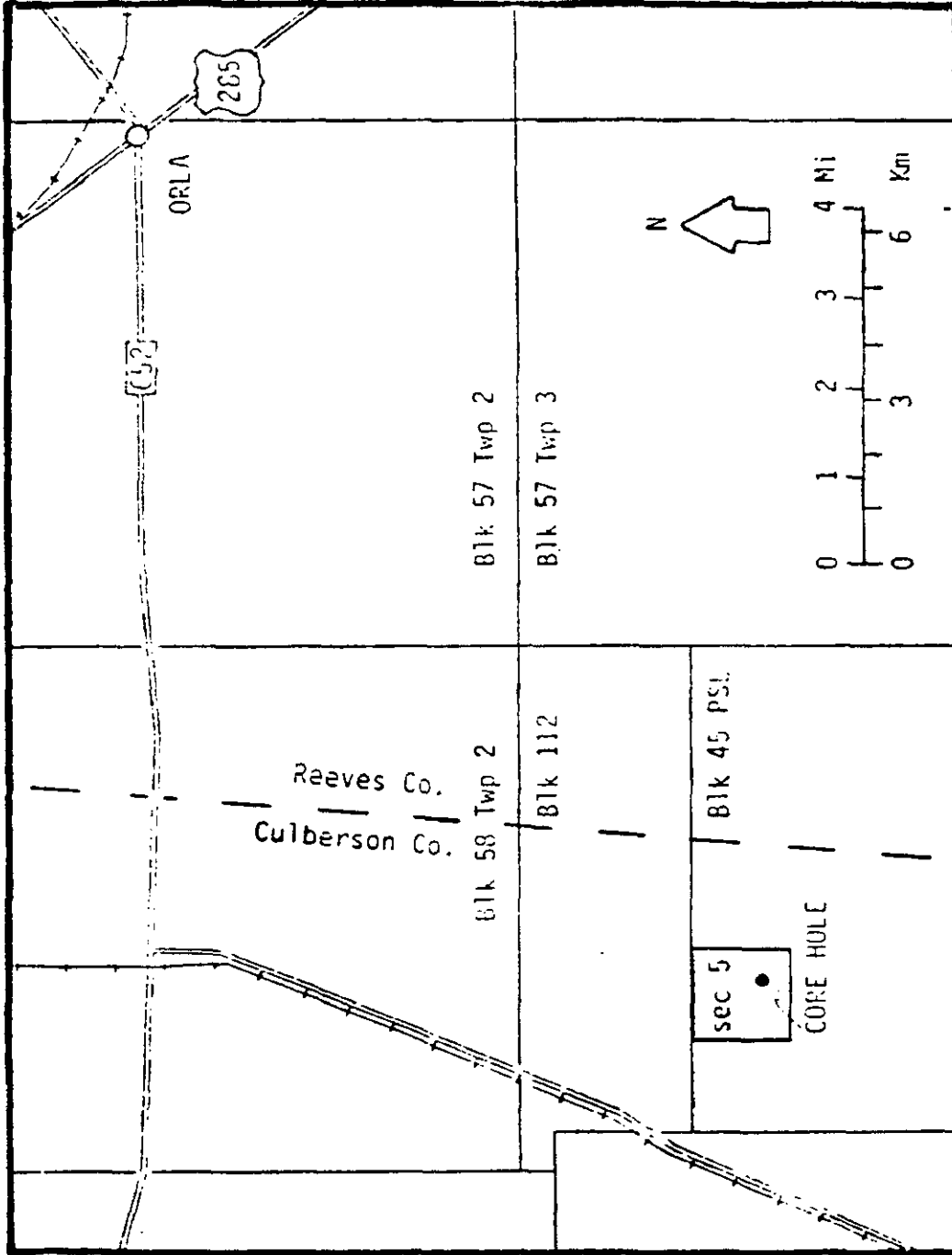


Figure 1.--Map showing the location of the Texasgulf Inc. sulphur core test.

Compliance Certification Application Reference Expansion

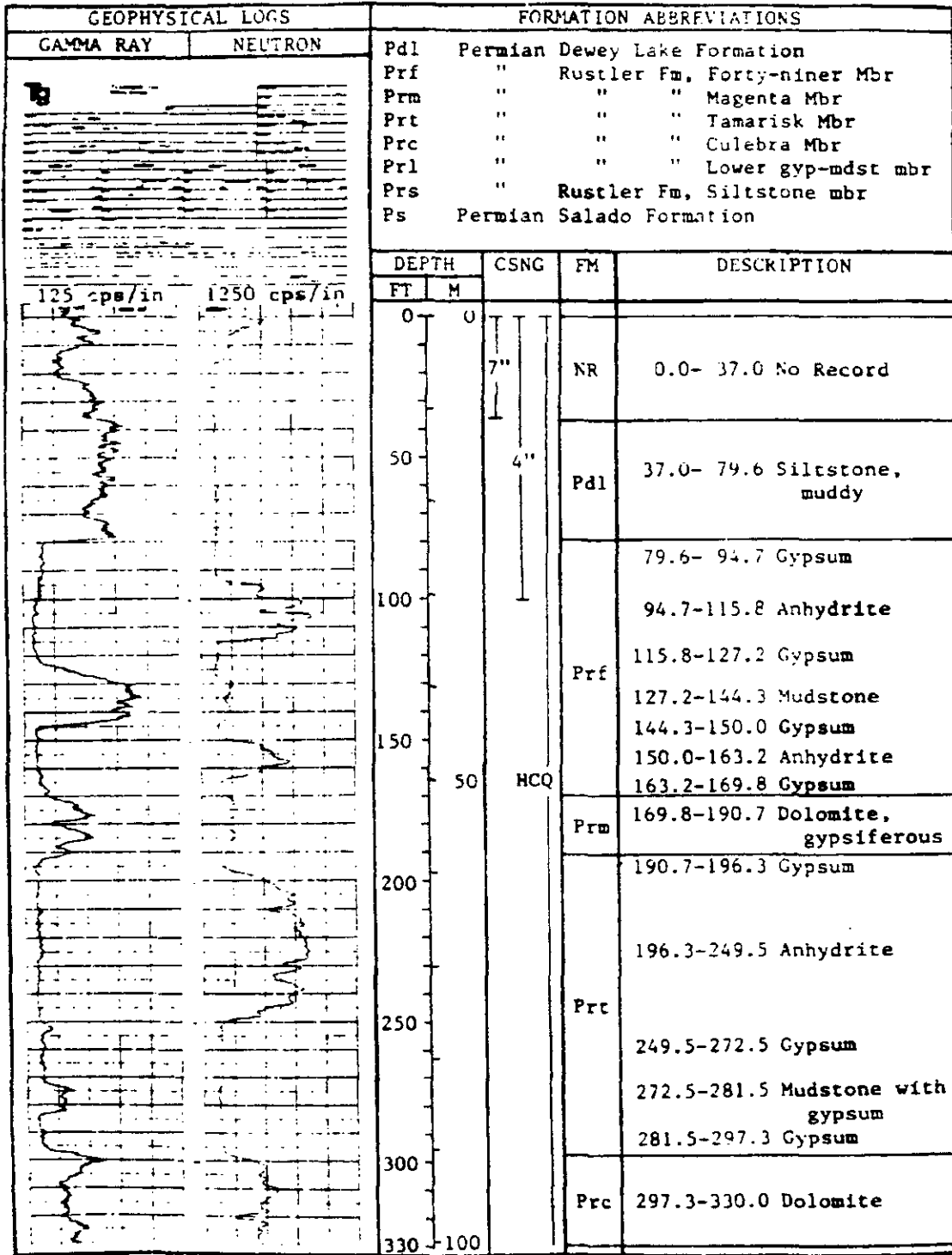


Figure 2A.--Geophysical logs of Texasgulf core hole, surface to 330.0 feet.

Compliance Certification Application Reference Expansion

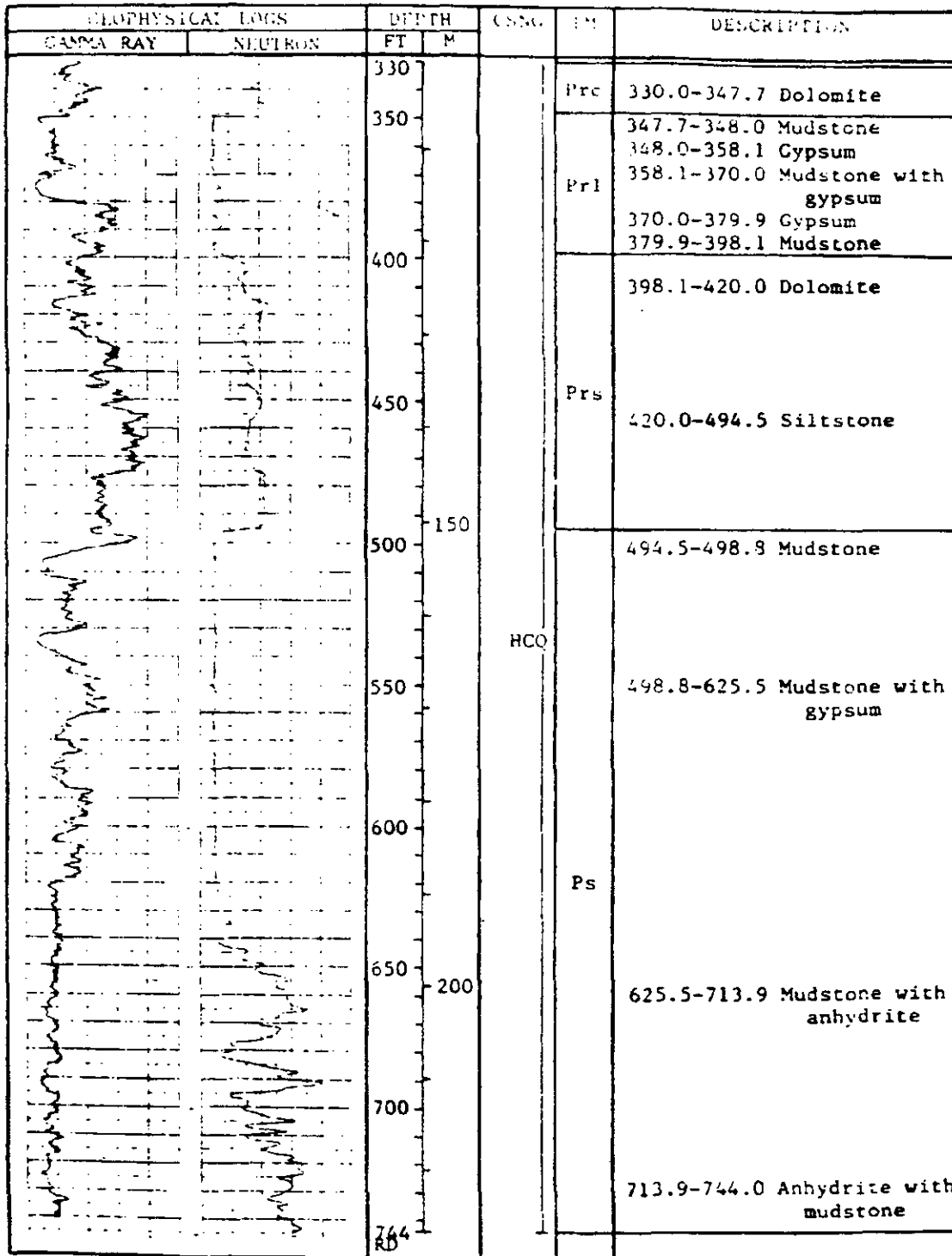


Figure 2B.--Geophysical logs of Texasgulf core hole, 330.0 to 744.0 feet.